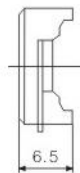
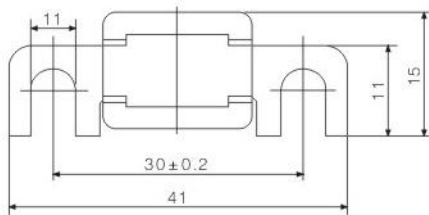


序号 No.	产品型号 Models	产品名称 Components	额定电压 (V) Rated voltage	额定电流 (A) Rated current	外形尺寸Outline dimension(mm)	重量 (g) Weight
					图号 Fig.	
D0253	RQ6	熔断体	DC48/AC125	80~150	15.3	22



用途 Applications

本系列汽车用熔断器适用于额定电压直流至48V或交流（50Hz）至125V、额定电流至800A，主要作为电气线路的过载和短路保护。

This series automobile fuse is applied for overload and short circuit protection in electric circuit with rated voltage up to DC 48V or up to AC 125V (50Hz) and rated current up to 800A.

结构特点 Design Features

本系列汽车用熔断器由二部分组成—熔断体和熔断器座。熔断体按不同使用要求分为普通型（CNL、RQ1）和快速型（CNN）二种，均为螺栓连接式。熔断体可以直接与母线连接，省去一个熔断器座；也可以将熔断体固定在一个已安装好的熔断器座（RQD-1）上，更换熔断体比较方便。

This series automobile fuse is composed of fuse-element and fuse-holder. The fuse-element can be classified into general type (CNL, RQ1) and quick-action type (CNN), both of whom are connected with bolt. The fuse-element can be connected with bus-bar directly without a fuse-holder, it can also be fixed on fit fuse-holder (RQD-1), which is more convenient for fuse-element exchange.

基本数据 Basic Data

熔断体型号、额定电压、额定电流、外形尺寸见图15.1-15.4及表15：

See fig. 15.1-15.4 and table 15 for fuse-element model, rated voltage, rated current and outline dimension: