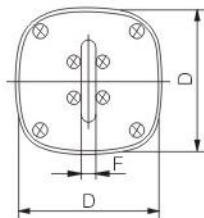
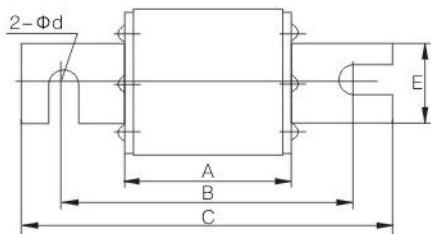


序号 No.	熔断体型号 Models		额定电压 (V) Rated voltage	额定电流 (A) Rated current	外形尺寸(mm) Outline dimension(mm)								重量 (g) Weight
	本公司 JINSHAN	国内外同类产品 Cross-reference			图号 Fig	A	B	C	D	E	F	Φd	
D0172	RS71B	LK-NES	800	50~200	12.2	76	104	135	43	22	6	10.5	370
D0173	NGT1	RS6-1	380/660/1000	100~250	12.2	68	110	140	48	25	6	10.5	458
D0174	NGT2	RS6-2	380/660/1000	200~400	12.2	68	110	140	58	32	6	10.5	654
D0175	NGT3	RS6-3	380/660/1000	355~630	12.2	68	110	140	67	38	6	10.5	920



用途 Applications

本系列熔断体适用于交流50Hz, 额定电压至1000V、额定电流至700A, 主要用在电气线路中作为半导体器件及其成套装置的短路保护(aR)。

本系列熔断体额定分断能力至100KA。

本系列熔断体符合国家标准GB13539.1/GB13539.4和国际电工委标准IEC60269-1/IEC60269-4。

This series of fuses are mainly used in circuits of AC 50Hz, rated voltage of 1000V and rated current of 700A, to protect the semiconductor components and the whole unit from circuit short.(aR).

The breaking capacity of the fuses is up to 100KA.

The fuses are compliant with the IEC60269-1/IEC60269-4 and GB13539.1/GB13539.4.

结构特点 Design Features

由纯银片制成的变截面熔断体封装于由高强度瓷制成的熔管内; 熔断中充满经化学处理过的高纯度石英砂作为灭弧介质; 熔体二端采用点焊与触头牢固电连接。熔断体型式为方管母线式连接。熔断体可带有指示器, 当熔体熔断时, 指示器立即动作, 显示熔断体已熔断。

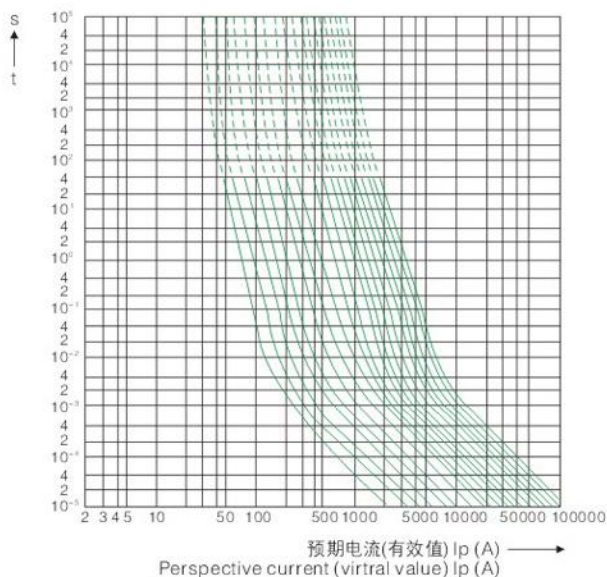
The variable cross-section fuse element made from pure silver sheets are sealed in the melting tube made of high-density porcelain; The fuse tube is filled with chemically treated high-purity quartz as arc-extinguishing medium; The two ends of the melting body are connected to the (knife) contactor by dot welding; Square pipe and bus bar type connection are available; A striker/indicator may be installed to the fuse link; When the fuse link breaks, signals are sent out in the case of an indicator, or the switch is pushed to cut the circuit in the case of a striker.

基本数据 Basic Data

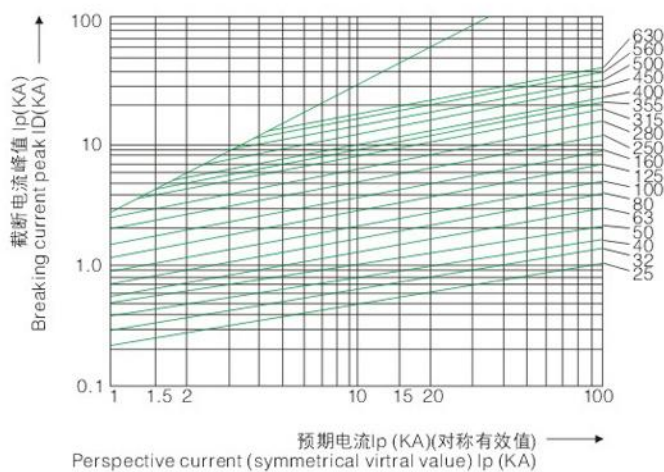
熔断体型号、外形尺寸、额定电压、额定电流见图12.1~12.4及表12。

The models, dimensions, ratings are shown in Figures 12.1~12.4 and Table 12.

特性曲线 Characteristics Curve



半导体器件保护用（快速型）熔断体的时间——电流特性曲线
Time-current characteristics curve of (fast) fuse links for semiconductor protection



半导体器件保护用（快速型）熔断体的截断电流特性曲线
Breaking current characteristics curve of (fuse) links for semiconductor protection