

概述 General description

PRW8系列户外高压跌落式熔断器适用于交流50Hz, 额定电压为10kV~35kV户外架空配电系统上, 作为线路或电力变压器的过载和短路保护用, 产品全型号上带有“F”字样的产品还具有合、分负荷电流的功能。本产品在正常动作或操作后, 载熔件跌落, 形成可见断口, 对维护检修起到安全保证作用。

本系列产品符合GB15166.3国家标准及IEC60282-2国际电工委员会标准。

PRW8 Series Outdoor high voltage Drop-out fuses are used in the system of 50Hz, rated voltage 10KV~35KV outdoor aerial distribution lines, to protect the circuit or power transformers against overloading and short circuit faults, the model marked with "F" can switch on/off loading current. The product in service will have an isolating break after fuse carrier drop out, this is to secure the safety during maintaining and repairing.

This series of products complies with the standards of GB15166.3 and IEC60282-2

产品正常使用条件 Normal working conditions

1. 海拔不超过1000m;
2. 周围环境温度不超过+40℃, 不低于-40℃;
3. 风压不超过700Pa (相当于风速34mm/s);
4. 无严重污秽、化学腐蚀、易燃、易爆及剧烈振动的场所。

1. Altitude not more than 1000m
2. Ambient temperature not exceed -40℃~+40℃
3. Wind pressure not more than 700Pa (namely wind speed 34m/s)
4. The working site shall have no heavy pollution, no chemical corrosive medium, and not flammable, explosive, severe vibration.

型号含义 Model And Implication

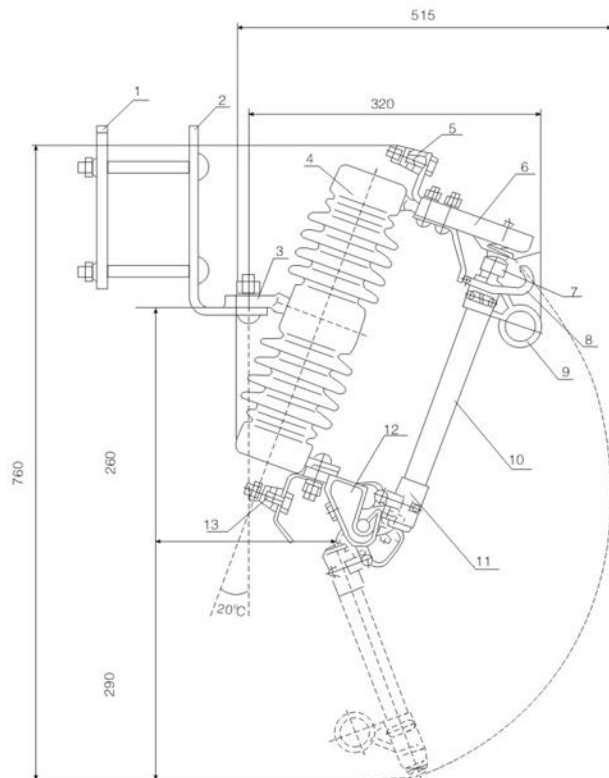
P	R	□	W	8	-	□	□	(□)	/	□	-	□
											额定开断电流	
											Rated interrupting current	
											额定电流	
											Rated current	
											耐污秽等级	
											Pollution grade	
											若有字样“F”, 表示带合分负荷电流功能。	
											"F", able to switch on/off circuit with load	
											反之, 则不带合分负荷电流功能。	
											otherwise, it can't do it	
											额定电压	
											Rated voltage	
											设计序号	
											Design code	
											户外使用	
											Use outside	
											若有字样“H”, 表示为有机复合绝缘子。	
											"H", polymer insulator type	
											反之, 则为瓷绝缘子。	
											Otherwise, porcelain insulator type	
											熔断器	
											Fuse	
											喷射式	
											Expulsion type	

产品特点 Product features

- 1.本系列产品采用单端排气结构,能保证从过载直至短路故障电流的可靠开断,同时能防止在开断过程中,对熔断器安装部位上方的线路或设备的损害。
- 2.上触座对载熔件上触头施以正向压力,有效保证了导电接触良好,开断后载熔件可靠跌落。
- 3.精心设计的接线端子能方便固定各种规格导线,使用一把扳手,单手即可完成接线操作。
- 4.专门设计的叉钩能有效将载熔件导入合闸位置,同时也为使用便携式负荷切断器提供了可能。

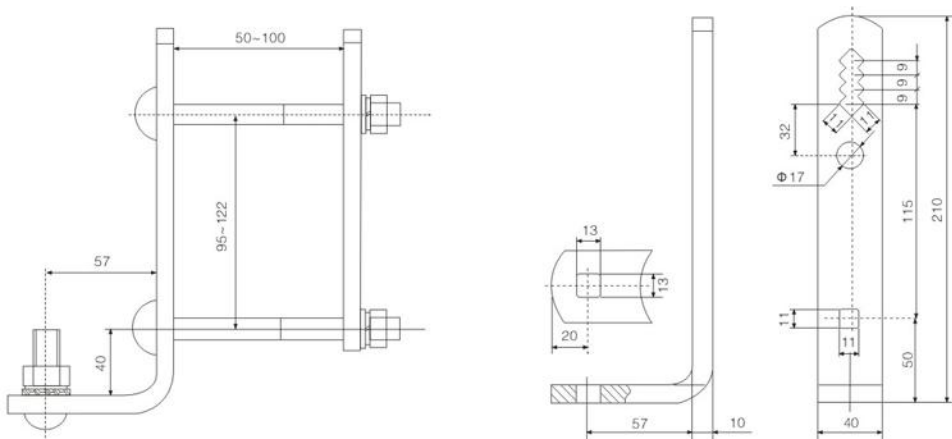
- 1.This series of product is designed as gas exhausting from one side,which it can trip overloading and short circuit fault current reliable,and avoid the circuit or equipment on upside from being damaged.
- 2.Upside contacting socket will use spring to give positive pressure on the upper moving contact of fuse carrier keep good contacting.
- 3.General terminals can hold different conductors,one wrench can perform the connection
- 4.The disconnect stick can push the fuse carrier in ON position,meanwhile it can operate for portable load cutter.

零部件描述 Parts description



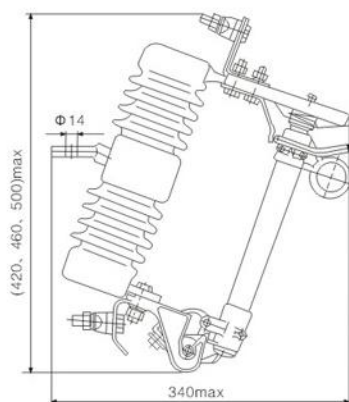
- 1.背板 Direct mounting plate
- 2.安装板 L mounting plate
- 3.固定件 Fixing stud
- 4.陶瓷绝缘子 Porcelain insulator
- 5.上接线端子 Upper terminal
- 6.上触座 Upper contacting socket
- 7.接触帽 Contact cap
- 8.导向挂钩 Guide hook
- 9.操作环 Operating ring
- 10.消弧管 Fuse tube
- 11.下触头 Downside contact
- 12.下触座 Downside Contact socket
- 13.下接线端子 Downside terminal

■ 安装支架 Mounting bracket

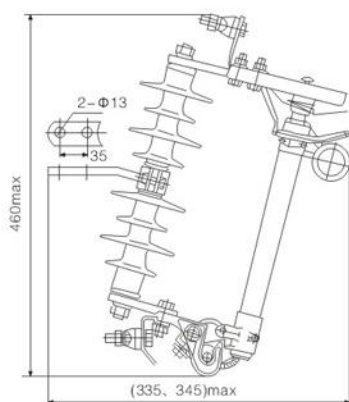


■ 技术参数 Technical parameters

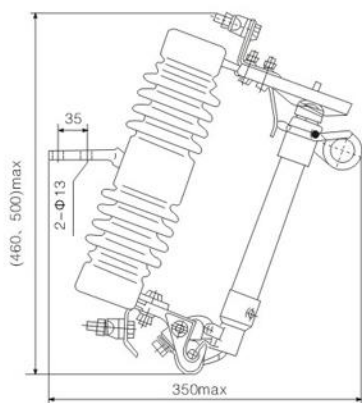
序号 No.	型号 Type	额定电压 (kV) Rated Voltage(kV)	额定电流 (A) Rated Current(A)	合、分负荷电流A/次 Cycles of switching loading current	最大开断电流 (kA) Maxi interrupting current(kA)
			熔断器 Fuse carrier	熔断件 Fuse element	
G0068	PRW8-12(II)100	12	100	6.3~100	8(10)
G0069	PRW8-12(III)100			-	-
G0070	PRW8-12(IV)100			-	-
G0071	PRW8-12(III)200		200	125~200	10(12.5)
G0072	PRW8-12(IV)200		200	6.3~100	8(10)
G0073	PRHW8-12/100			-	-
G0074	PRHW8-12/200			125~200	10(12.5)
G0075	PRW8-12F(III)/100		200	6.3~100	8
G0076	PRW8-12F(IV)/100			-	-
G0077	PRW8-12F(III)/200			125~200	10(12.5)
G0078	PRW8-12F(IV)/200	40.5	100	5/15	10(12.5)
G0079	PRHW8-12F/100			130/5	8(10)
G0080	PRHW8-12F/200			125~200	10(12.5)
G0081	PRHW8-40.5(I)/100		100	6.3~100	-
G0082	PRHW8-40.5(II)/100			-	6.3(8)
G0083	PRHW8-40.5/100			-	-



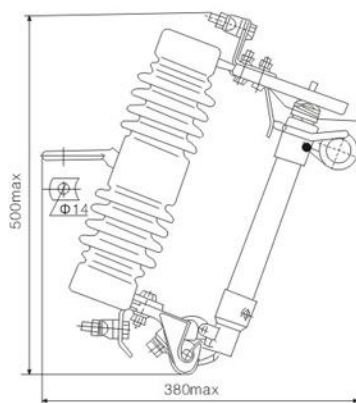
PRW8-12(II, III, IV)/100型熔断器
PRW8-12(II,III,IV)/100 dropout fuse



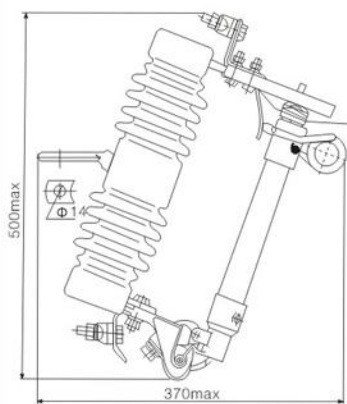
PRHW10-12/(100, 200)型熔断器
PRHW10-12/(100,200)dropout fuse



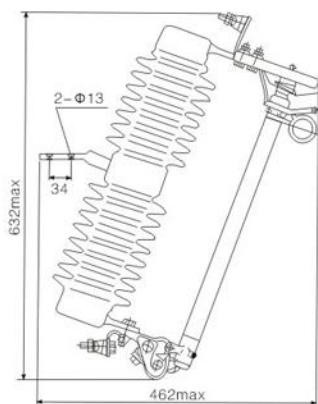
PRW8-12(III, IV)/200型熔断器
PRW8-12(II,IV)/200 dropout fuse



PRW8-(15-27)/100型熔断器
PRW8-(15-27)/100 dropout fuse



PRW8-(15-27)/200型熔断器
PRW8-(15-27)/200 dropout fuse



PRW8-40.5/100型熔断器
PRW8-40.5/100 dropout fuse

10kV-15kV

序号 No.	产品型号 Model	额定电压 Rated voltage	额定电流 Rated current	开断电流 Interrupting current	冲击电压 Impulse voltage	工频耐压 p.f withstand voltage	爬距 Creepage distance	重量 Weight	外形尺寸 Dimension
G0094	RW10-100	12	100	6300	100	42	360	8.5	56 x 13 x 40
G0095	RW10-200	12	200	8000	110	42	360	8.5	